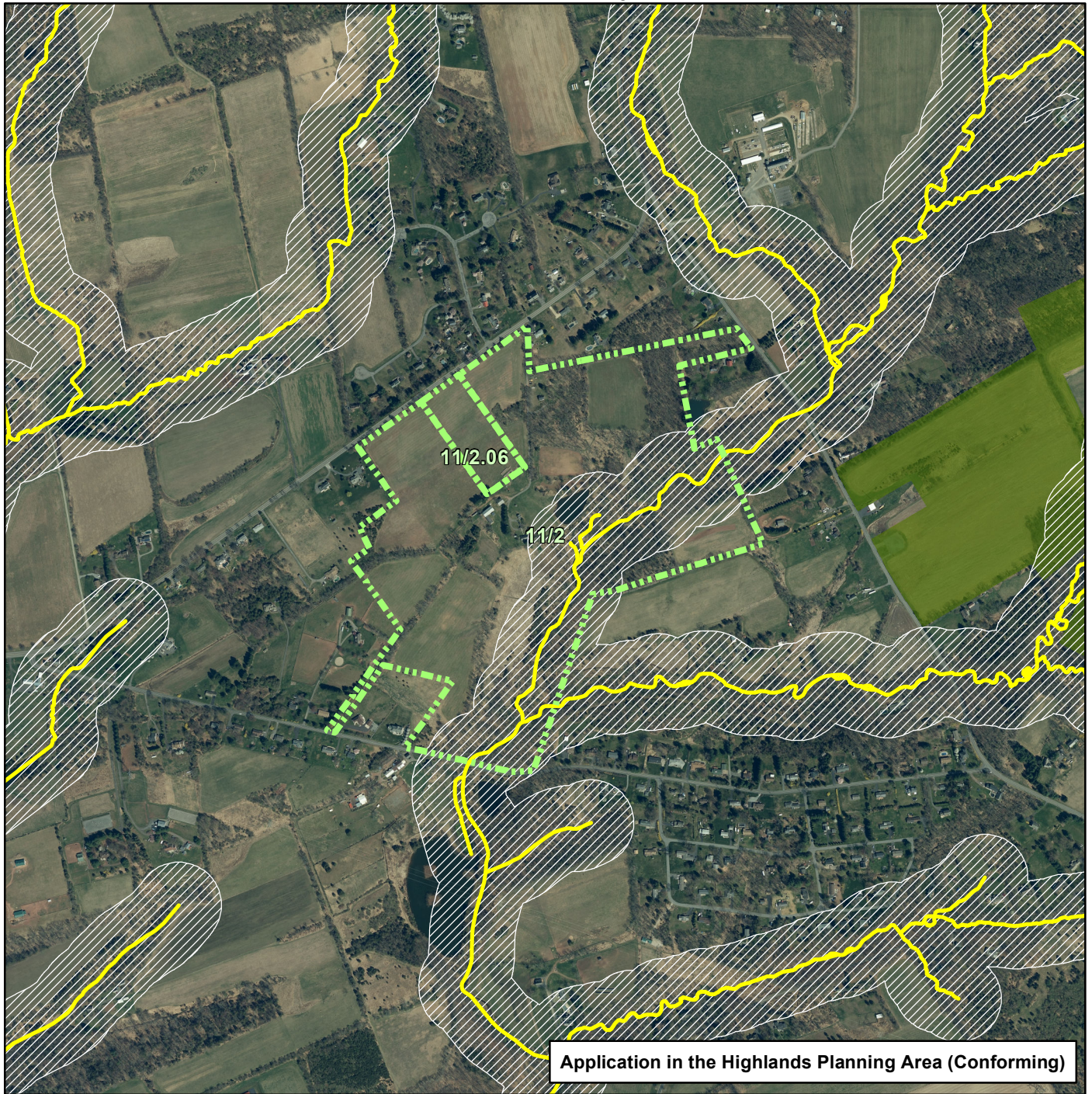


Surface Water Quality Standards

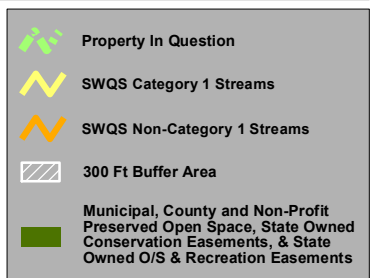
X:\counties\hunco\projects\Schmied, Wayne R SWQS.mxd



NJ FARMLAND PRESERVATION PROGRAM State Agriculture Development Committee

Schmied, Wayne R.
Block 11 Lots 2 (111.5 ac) & 2.06 (5.9 ac)
Gross Total = 117.4 ac
Holland Twp., Hunterdon County

500 250 0 500 1,000 Feet



DISCLAIMER: Any use of this product with respect to accuracy and precision shall be the sole responsibility of the user. The configuration and geo-referenced location of parcel polygons in this data layer are approximate and were developed primarily for planning purposes. The geodetic accuracy and precision of the GIS data contained in this file and map shall not be, nor are intended to be, relied upon in matters requiring delineation and location of true ground horizontal and/or vertical controls as would be obtained by an actual ground survey conducted by a licensed Professional Land Surveyor.

Note: The "SWQS" (Surface Water Quality Standards) data depicted on this map are available at www.nj.gov/dep or <https://njin.nj.gov>. Its purpose is to help determine if a property may be subject to the Stormwater Management rules. When interpreting the SWQS, the SWQS regulations at N.J.A.C. 7:9B will always take precedence. These GIS layers are supplemental only and not legally binding. Not all tributaries of Category I streams have been mapped. Actual stream courses may not be visible on the map due to map scale. The user should regularly refer to: <https://gisdata-njdep.org/datasets/njdep::surface-water-quality-classification-of-new-jersey/about> OR <https://njin.nj.gov> for updated information.

Sources:
NJ Farmland Preservation Program
NJOIT Parcel Data
NJDEP Surface Water Quality Standards
NJDEP Conservation/Open Space Easement Data
NJDEP Category One (C1) Waters of New Jersey
NJOIT/OGIS 2020 Digital Aerial Image

October 11, 2022